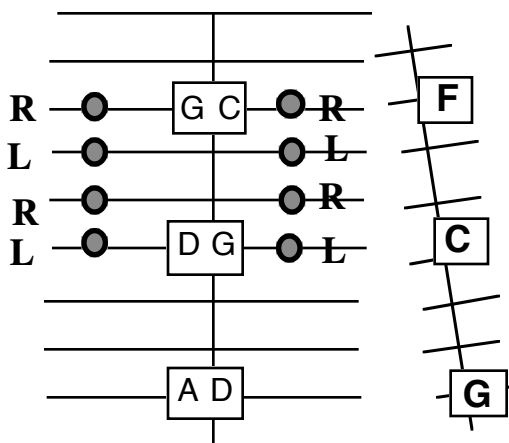
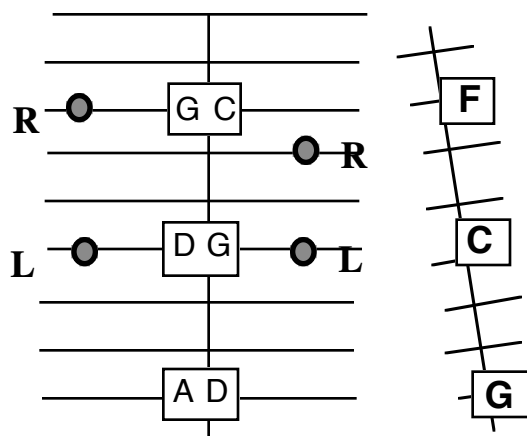


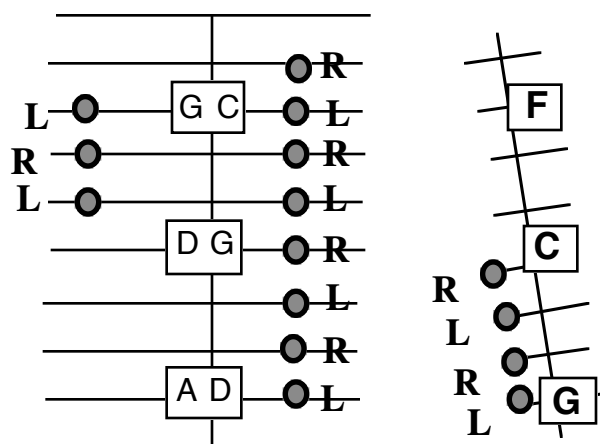
G Scales & Arpeggio



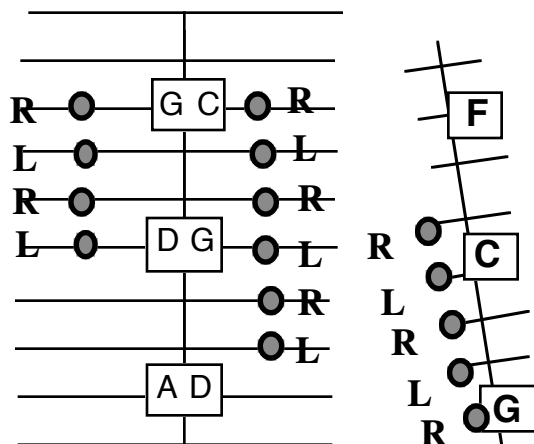
G Scale in G Box



G Scale Arpeggio



2 Octave G Scale
start with left hand



2 Octave G Scale
start with right hand

Follow hand suggestions learn two different hammering patterns for the 2-octave scale.

You'll use the notes in the G box for the following tunes.... but you'll also use notes in the octave below the G box. You can think of this as the "lower G Box" but you will notice that the notes below the G box on the RIGHT treble bridge are the same notes you played in the D box in the previous tunes.